



PROM ATTIRE

The WEHS prom is a formal event.

Any inappropriate attire may be turned away at the door at the administration's discretion.

ACCEPTABLE



FRONT CUTS

UNACCEPTABLE



SLITS

ACCEPTABLE



UNACCEPTABLE



LENGTH

ACCEPTABLE



UNACCEPTABLE



ACCEPTABLE

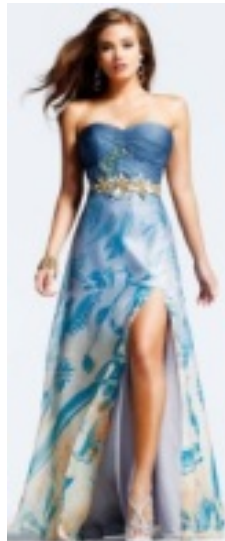
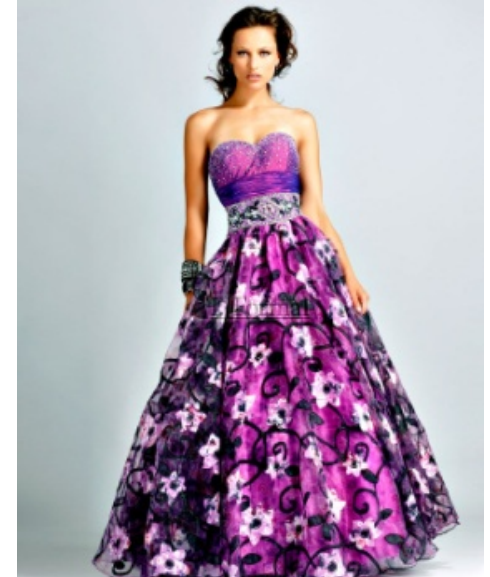


OPEN BACK

UNACCEPTABLE



ACCEPTABLE



UNACCEPTABLE



AND FOR THE GENTLEMEN...

ACCEPTABLE



UNACCEPTABLE





PROM ATTIRE

The WEHS prom is a school function. Students are expected to dress appropriately.

If you are unsure if your attire will be considered appropriate, take a photo and ask your assistant principal or Mr. Williams.

OUTSIDE GUEST APPROVAL

- ALL non Wylie East School Student dates must have a pre-approved form on file prior to the selling of tickets
- The forms will be located in the front office, 805, and 108 starting on **April 16**.
- Non Wylie East dates/guests cannot attend prom if they have been out of high school for over two school years or are 21 years of age or older.
- We will begin selling tickets on **April 23rd** so your form must be on file by **27th**!

