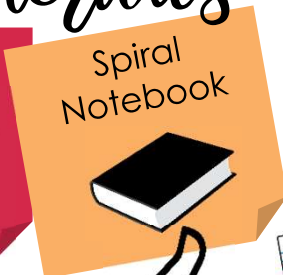
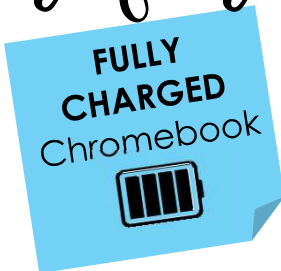


HEALTH SCIENCE Syllabus 2020-2021

***PLEASE NOTE: THIS COURSE WILL BE ON VIDEO CAMERA FOR ONLINE LEARNERS. ALL STUDENTS ARE SUBJECT TO BEING ON CAMERA IN THIS CLASSROOM.**

required materials



expectations

Be **KIND**, stay **ENGAGED**, & work **HARD**.

Beginning of class → Take a seat by the time the bell rings, **put your phone/earbuds away**, check the board for what supplies you will need that day and wait for further instruction.

During class → Listen, participate, and ask questions.

End of class → Stay in your seat until dismissed. Do not line up at the door.

academic dishonesty

Academic dishonesty will NOT be tolerated under any circumstances. Cheating, copying, or plagiarism of any form will result in failure of the assignment, disciplinary referral, and parent contact.

Mrs. Wiskur

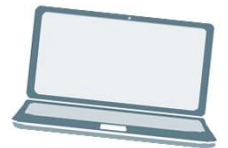
Room: 481

Email: Meredith.Wiskur@wylieisd.net

 Twitter: @Healthwhs

This is our Health Science account

technology



We will utilize Google Classroom. You must "join" my class by going to classroom.google.com. Class code will be provided on the board

grades

"Will this be on the test?"
YES. THE TEST IS YOUR
FUTURE & YOU ARE
PREPARING FOR IT NOW.

GRADE SET-UP

- **60%** Major grades (unit tests, projects, etc.)
- **40%** Minor grades (daily grades, quizzes, etc.)

LATE/MAKE-UP WORK:

Late work will be accepted up to 1 day after the due date for a maximum grade of 70. Work turned in later than 1 day after the due date will be recorded in the gradebook as a zero.

Re-do/Re-take: Maximum grade is a 70 for every school day absent, the student has one school day for completion of missed assignments. work. **IT IS YOUR RESPONSIBILITY TO RESCHEDULE MISSED ASSESSMENTS.**